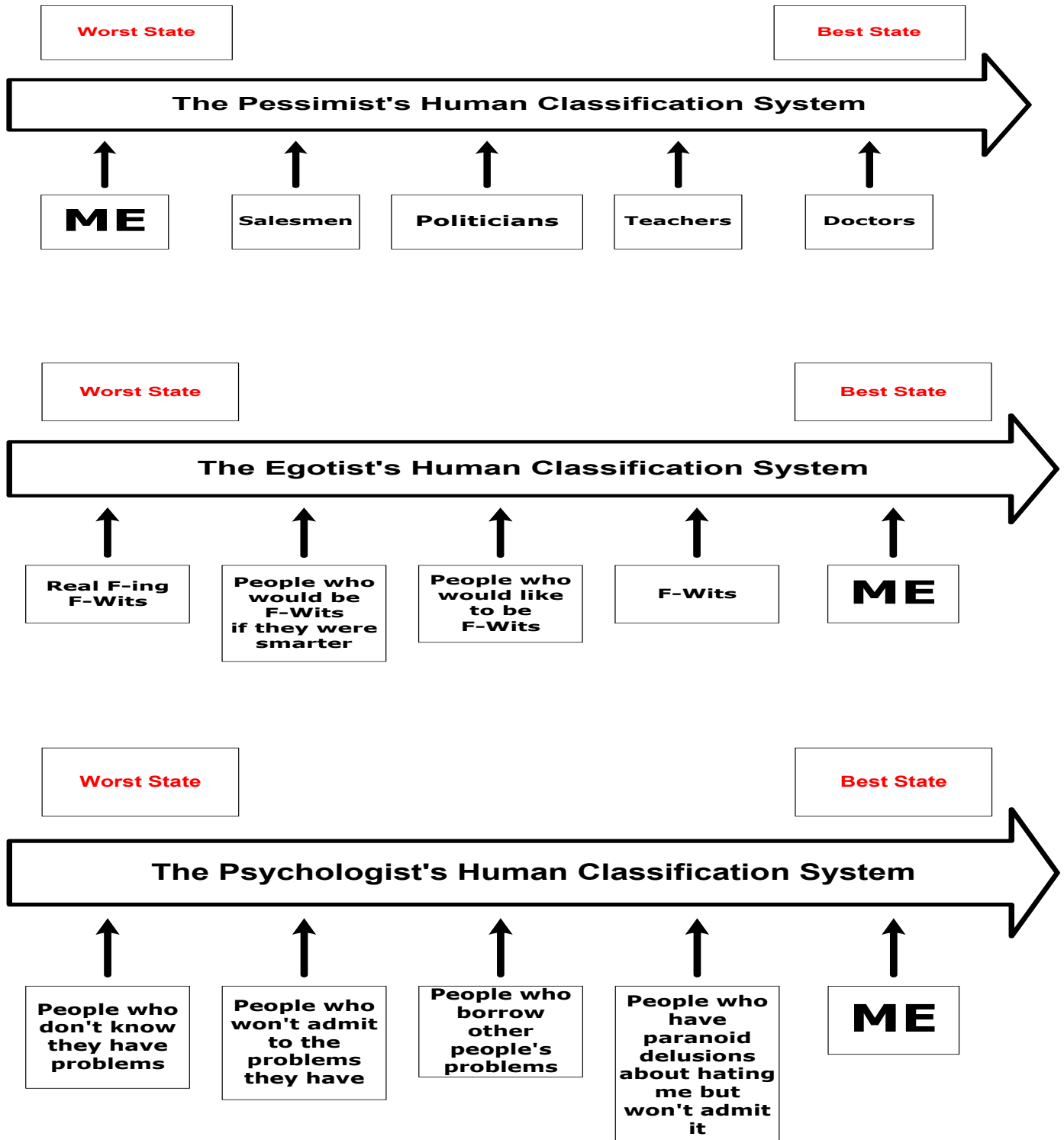
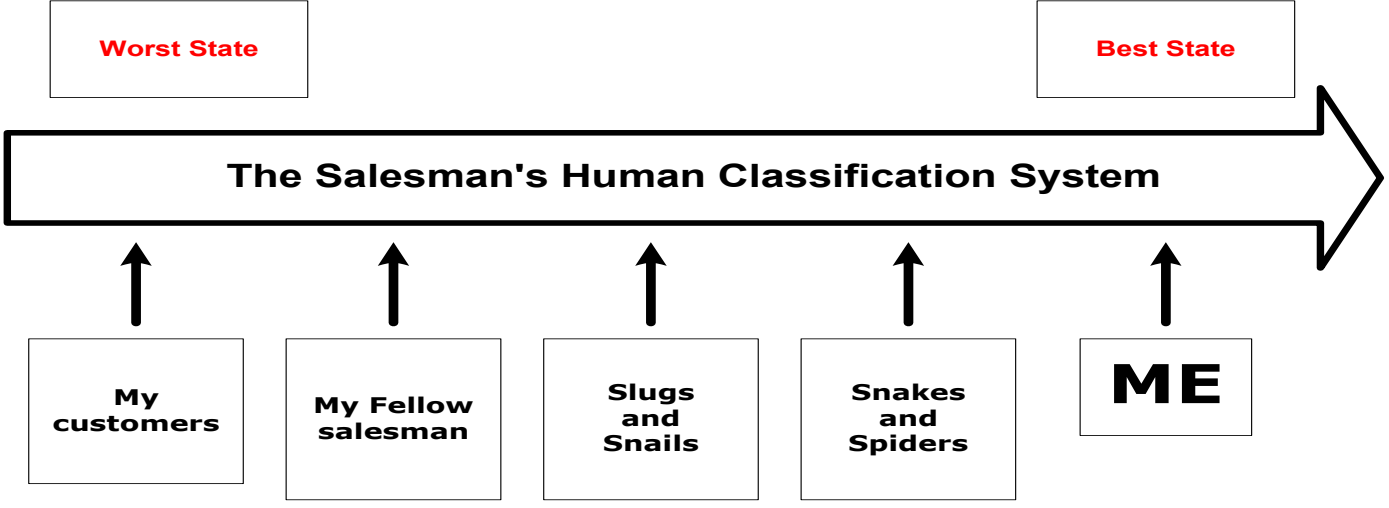
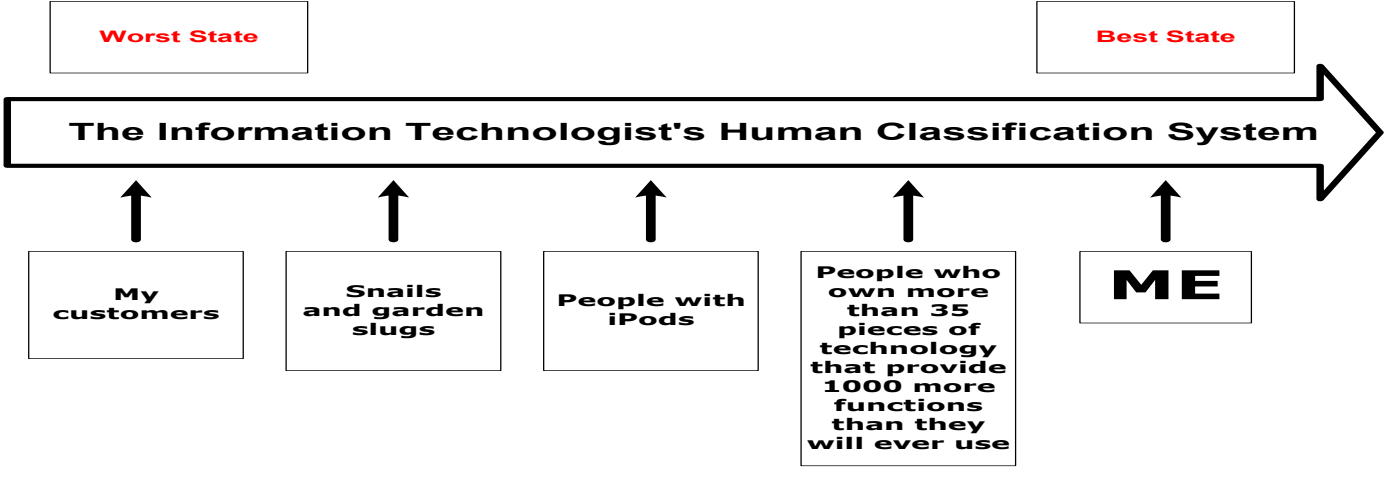
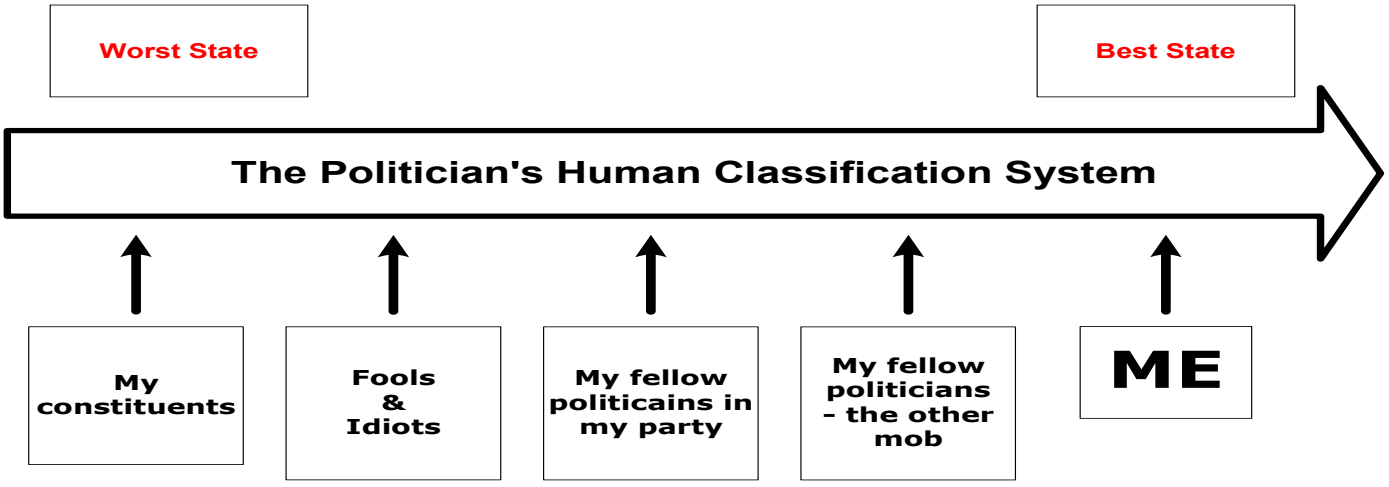
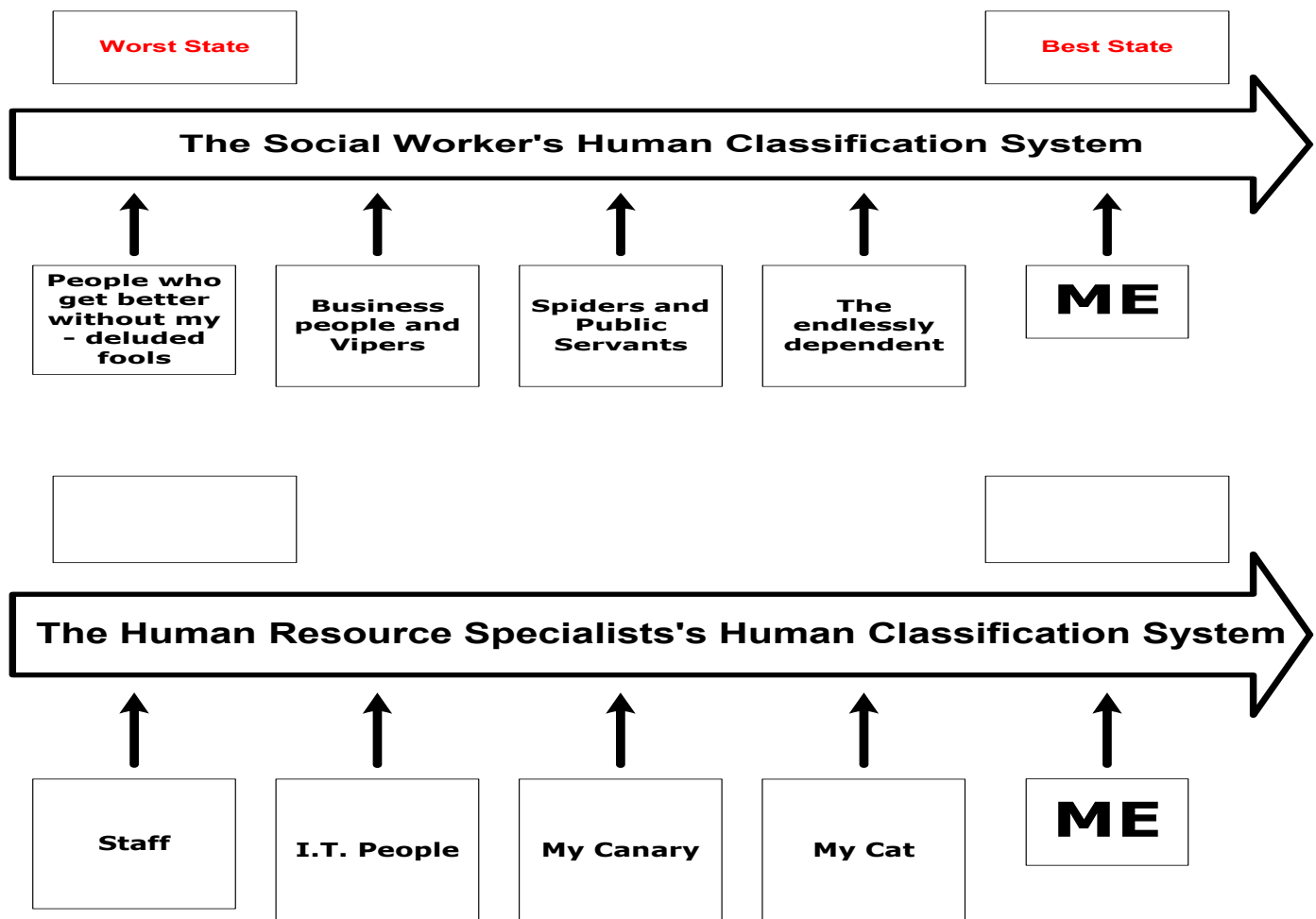

Dr. Leigh's Laughs - 1

The People Categorisation System







Dr. Leigh

Dr. Kibby, known as "Dr. Leigh," is one of the world's truly innovative thought leaders having founded the Noetic Psychology movement and developed numerous new paradigms such as the:

- 9 Happiness Habits
- the Sustainability Triangle (Psychology-Sociology-Ecology)
- L.E.T. (Language-Emotion-Thought) framework
- Affective-Cognitive Integration Model (the NEW Emotional Intelligence)
- "Intelligence of Emotions" and
- Psychological Genome.

Awards / Publications / Presentations

- Joint Winner of the Best Paper Award at the 2002 International Emotions In Organisations Conference
- Two papers titled "Servant-leadership" and "Noetic Leadership" presented at the 2003 British Academy of Management Conference
- Presented two papers titled "Servant-leadership Skills" and "Noetic Leadership Skills" at the 2004 Gallup Leadership Institute Conference
- Co-author of "Intelligent Emotions Management" for the internationally released book Key Issues in Organisational Communication
- ERA technique cited in Intercultural Communication 1st Edition



Dr. Leigh Kibby Phd; Grad Dip GW; Bed; Dip T
<http://www.kinematic.com.au>

